

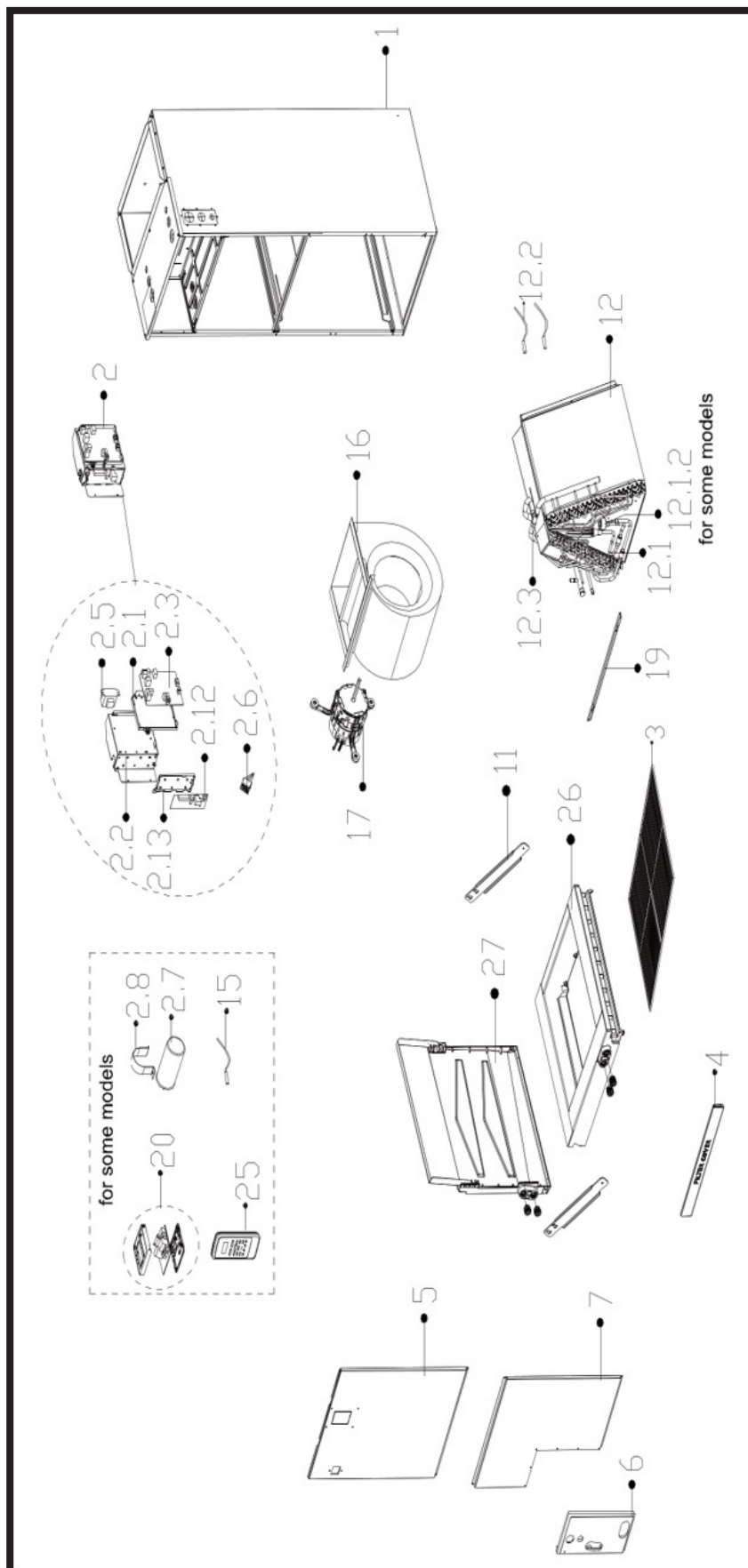


PARTS LIST

Hyper Heat Single Zone Air Handler & Condenser

B-VCD36SA-1

EXPLODED VIEW



REPLACEMENT PARTS

| Location | Part Name | Quantity | Part No. |
|----------|--|----------|----------------|
| 1 | Chassis | 1 | 12223100000879 |
| 2 | Duct electronic control box subassembly | 1 | 17223000009525 |
| 2.1 | Installation plate for main board | 1 | 12123000000920 |
| 2.2 | E-part box Subassembly | 1 | 12223100000876 |
| 2.3 | Duct main control board subassembly | 1 | 17123000010365 |
| 2.5 | Linear Transformer | 1 | 11203103002659 |
| 2.6 | Wire joint | 1 | 17400401000085 |
| 2.12 | Data transfer module control board printed board subassembly | 1 | 17122000059682 |
| 2.13 | Bracket of main control board | 1 | 12120300000522 |
| 3 | Air filter | 1 | 12223000014171 |
| 4 | Dust mesh | 1 | 12223100000652 |
| 5 | Upper Cover Plate assembly | 1 | 12223100000880 |
| 6 | Clamp for connecting pipe assembly | 1 | 12223100000711 |
| 7 | Under Cover Plate assembly | 1 | 12223100000897 |
| 11 | Bracket for Water collector | 2 | 12223100000663 |
| 12 | Evaporator assembly | 1 | 15823100000745 |
| 12.1 | Evaporator inlet pipe subassembly | 1 | 15123000013329 |
| 12.1.2 | Electronic expansion valve body | 1 | 15500213000265 |
| 12.2 | Pipe temperature sensor | 1 | 11201007004863 |
| 12.2 | Pipe Temperature Sensor | 1 | 11201007003437 |
| 12.3 | Evaporator outlet pipe subassembly | 1 | 15123000013350 |
| 15 | Room Temperature Sensor | 1 | 11201007004864 |
| 16 | centrifuge fan assembly | 1 | 12200101000253 |
| 17 | Brushless DC Motor | 1 | 11002015015864 |
| 19 | Clamp for Cover Plate assembly | 1 | 12223100000657 |
| 20 | Wired controller | 1 | 17317100A36414 |
| 25 | Remote controller | 1 | 17317000A63541 |
| 26 | Main Water collector assembly | 1 | 12123100000024 |
| 27 | Deputy Water collector assembly | 1 | 12123100000063 |
| 30 | Evaporator connecting pipe subassembly | 1 | 15123000012887 |
| 30 | Evaporator connecting pipe subassembly | 1 | 15123000012948 |



Due to ongoing product improvements, specifications and dimensions are subject to change and correction without notice or incurring obligations. Determining the application and suitability for use of any product is the responsibility of the installer. Additionally, the installer is responsible for verifying dimensional data on the actual product prior to beginning any installation preparations.

Incentive and rebate programs have precise requirements as to product performance and certification. All products meet applicable regulations in effect on date of manufacture; however, certifications are not necessarily granted for the life of a product. Therefore, it is the responsibility of the applicant to determine whether a specific model qualifies for these incentive/rebate programs.



1900 Wellworth Ave., Jackson, MI 49203 • Ph. 517-787-2100 • www.marsdelivers.com

